

Division of Environment
Curtis State Office Building
1000 SW Jackson St., Suite 400
Topeka, KS 66612-1367



Phone: 785-296-1535
Fax: 785-559-4264
www.kdheks.gov

Janet Stanek, Acting Secretary

Laura Kelly, Governor

February 2022

Please help us protect your health.

The U.S. Environmental Protection Agency (EPA) recently issued regulations requiring all public water supply (PWS) systems to develop a Lead Service Line Inventory (LSLI) of both water system owned and your privately owned service lines. Your PWS system must submit this inventory to the Kansas Department of Health and Environment (KDHE) by October 16, 2024.

Representatives of your water system may contact you in the near future to ask you to answer some questions such as the date your home was built or if you know what materials were used in your home's plumbing and service line, among other questions. Please take the time to respond to their inquiries as this will help determine if you or your family have a lead exposure risk. If you are unsure, your water system should be able to help identify materials. The goal is to remove all lead containing service lines to your home.

Piping containing lead can become a potential health risk in drinking water. Some homes (typically built before 1988 in Kansas) may have lead service lines on the customer's property that connect to your water system's main lines. On the back of this letter is a schematic of where lead sources in drinking water may be found.

Young children, infants, and fetuses are particularly vulnerable to lead in drinking water and water used for formula because the physical and behavioral effects of lead occur at lower exposure levels in children than in adults.

Additional information on the Lead and Copper Rule and identifying lead pipes and plumbing can be found on the KDHE website at: kdhe.ks.gov/547/

Or at the EPA Website at: epa.gov/dwreginfo/lead-and-copper-rule

Kansans working together will get the lead out of our water systems.

Thank you for your cooperation,

Kansas Department of Health & Environment
Public Water Supply Section
1000 SW Jackson, Suite 420
Topeka, KS 66612
kdhe.ks.gov/409/

Sources of **LEAD** in Drinking Water



Copper Pipe with Lead Solder: Solder made or installed before 1986 contained high lead levels.



Faucets: Fixtures inside your home may contain lead.



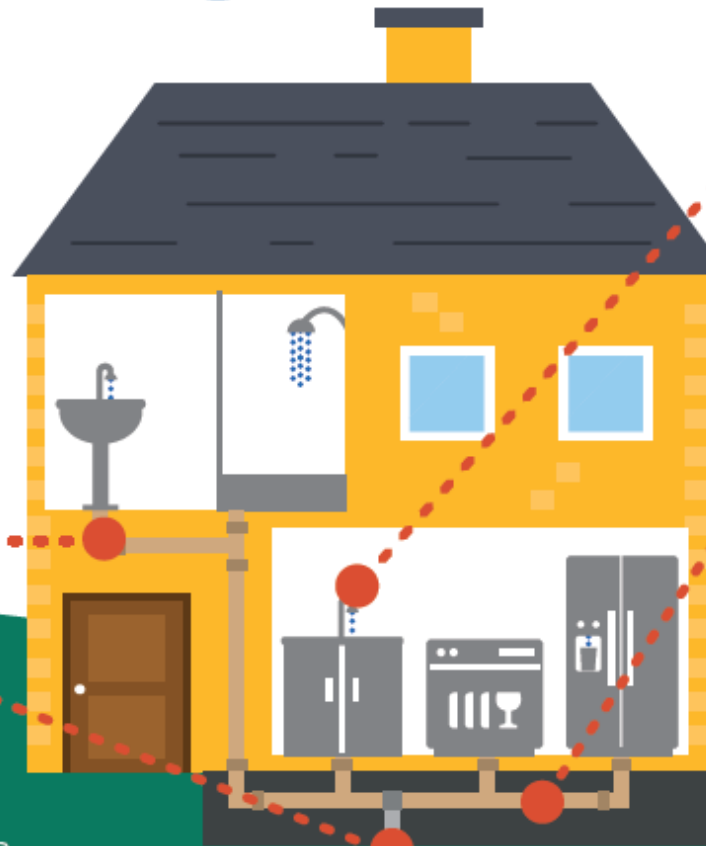
Galvanized Pipe: Lead particles can attach to the surface of galvanized pipes. Over time, the particles can enter your drinking water, causing elevated lead levels.



Lead Service Line: The service line is the pipe that runs from the water main to the home's internal plumbing. Lead service lines can be a major source of lead contamination in water.



Lead Goose Necks: Goose necks and pigtails are shorter pipes that connect the lead service line to the main.



WATER METER

MAIN WATER LINE